

Hydro Profile



Light Efficiency:

23 Lumen/Watt

Light Quality:

CRI: 71.6

Color Temperature:

6507 K

Output: 19528 lm

Peak: 340728 cd

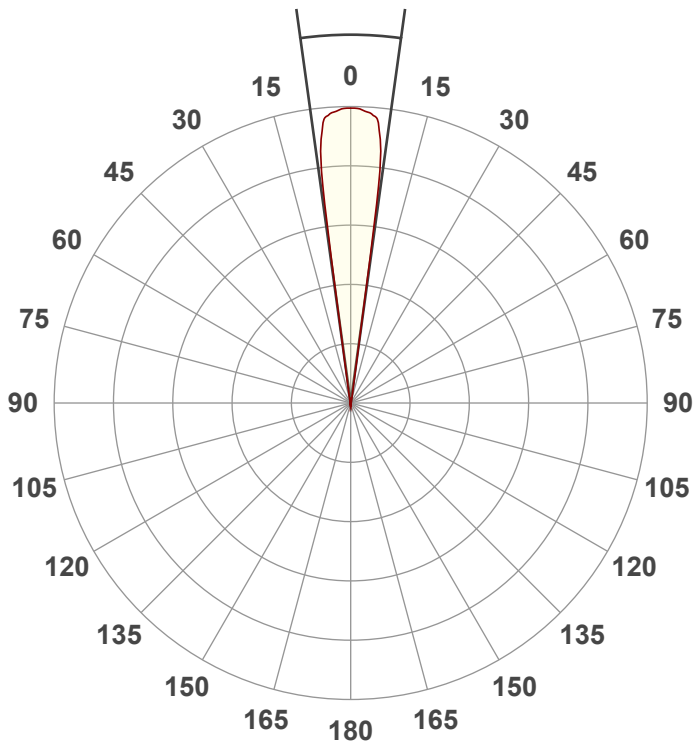
Power: 865 W

PF: 1.0



Beam Angle

15.7°



Test:

Zoom 50% 6500K

Date:

7/19/2022

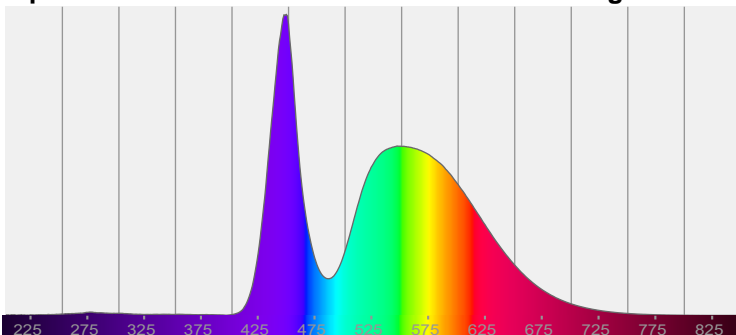
Note:

CTO @ 79

CIE 1931
x: 0.313
y: 0.328

Spectra

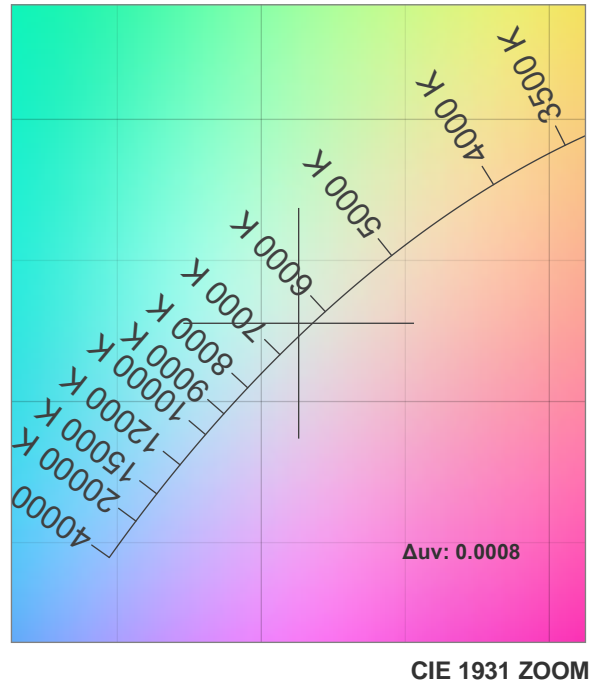
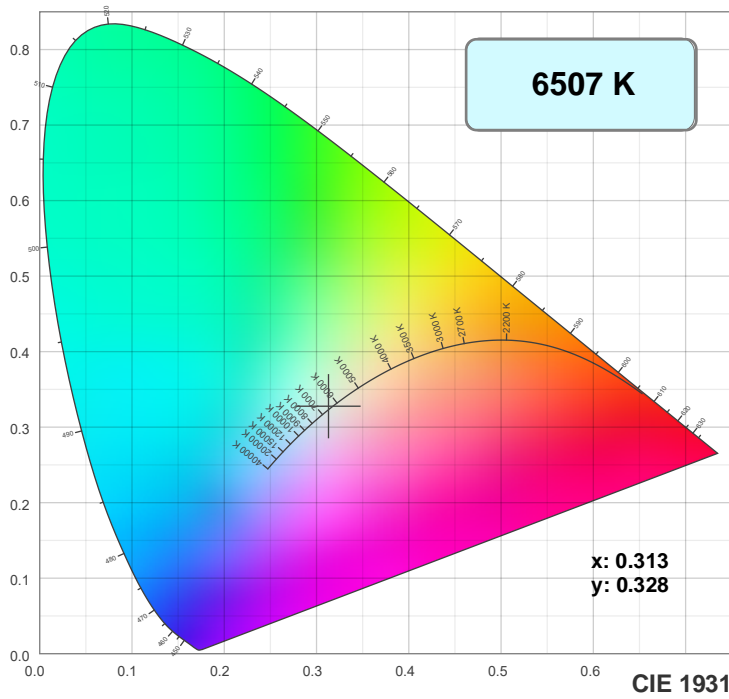
Dominant Wavelength: 360nm



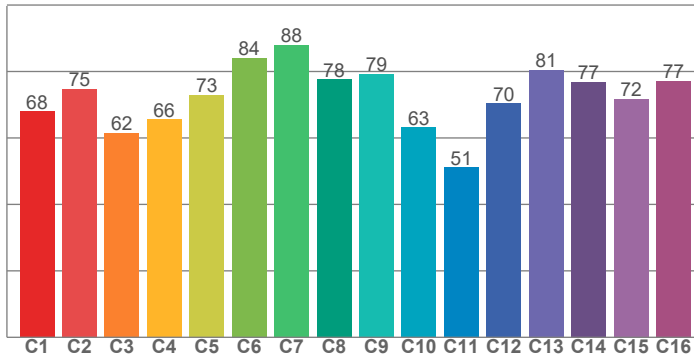
Power

Voltage: 118 V
Current: 7.33 A
Frequency: 0 Hz

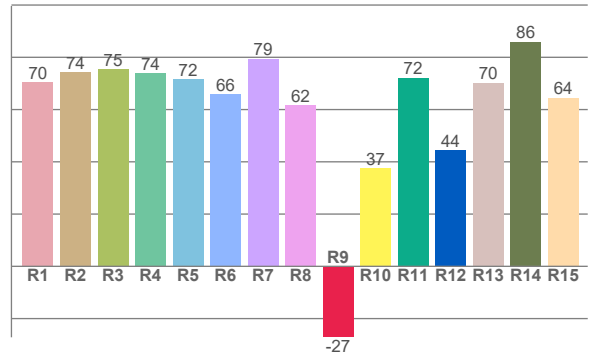
Color Details



TM30: 72.1



CRI: 71.6 (R1-R8)



CRI R values, only R1-R8 are used to calculate final CRI value

R1	R2	R3	R4	R5	R6	R7	R8	R9	R10	R11	R12	R13	R14	R15
70.4	74.3	75.4	73.8	71.7	65.8	79.5	61.6	-27.2	37.4	72.1	44.4	70.2	86.0	64.5

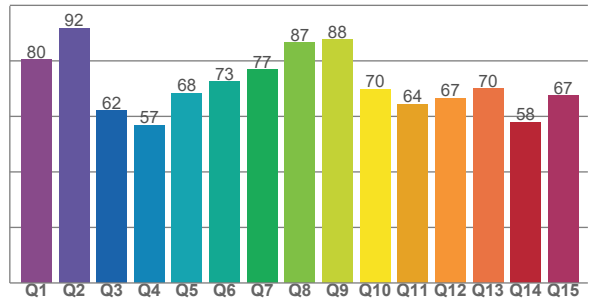
TM30 C values, 16 binned values out of total of 99 C values

C1	C2	C3	C4	C5	C6	C7	C8	C9	C10	C11	C12	C13	C14	C15	C16
68.0	74.7	61.5	65.6	73.0	84.1	88.1	77.7	79.3	63.1	51.2	70.3	80.5	76.9	71.8	77.1

CQS Q values

Q1	Q2	Q3	Q4	Q5	Q6	Q7	Q8	Q9	Q10	Q11	Q12	Q13	Q14	Q15
80.4	91.7	62.1	56.9	68.4	72.6	76.9	86.5	87.7	69.8	64.5	66.6	70.0	57.9	67.4

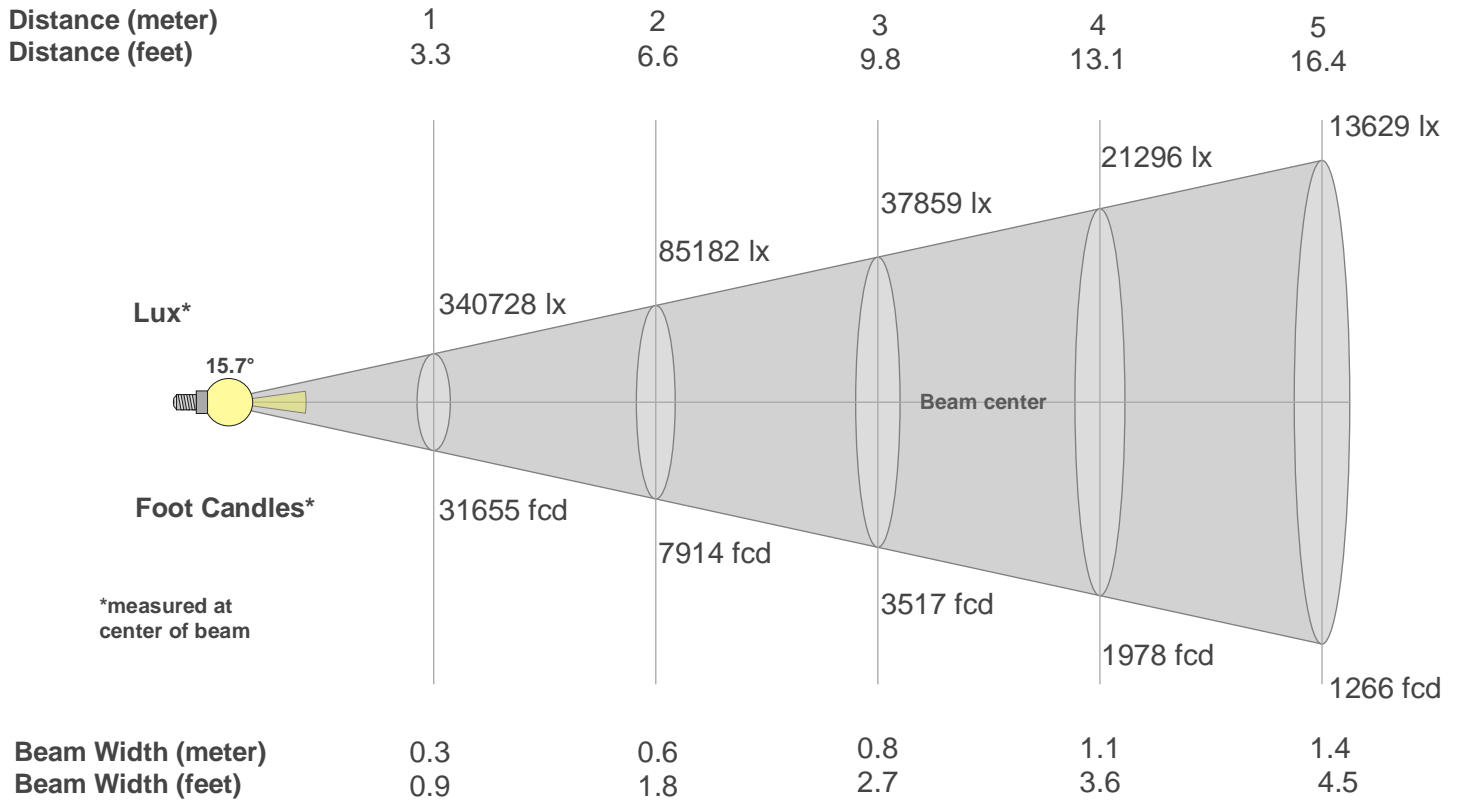
CQS: 70.1



Color Parameters

Color Temperature	Color Rendering Index	Red Component	Color Fidelity	Color Gamut	Color Quality Scale	Color Coordinate CIE 1931	Color Coordinate CIE 1931	Color Coordinate	Color Coordinate	Color Deviation from Black Body
CCT	CRI	CRI R9	TM30 Rf	TM30 Rg	CQS	x	y	u	v	Δuv
6507 K	71.6	-27.2	72.1	94.4	70.1	0.313	0.328	0.198	0.312	0.0008

Beam Details



Beam Intensities from 1-20m

m	1	2	3	4	5	6	7	8	9	10	11	12	13	14	15	16	17	18	19	20
ft	3.3	6.6	9.8	13.1	16.4	19.7	23	26.2	29.5	32.8	36.1	39.4	42.7	45.9	49.2	52.5	55.8	59.1	62.3	65.6
lx	340728	85182	37859	21296	13629	9465	6954	5324	4207	3407	2816	2366	2016	1738	1514	1331	1179	1052	944	852
fcd	31654.7	7913.7	3517.2	1978.4	1266.2	879.3	646	494.6	390.8	316.5	261.6	219.8	187.3	161.5	140.7	123.7	109.5	97.7	87.7	79.1

Intensities in 0° C-plane

0°	1°	2°	3°	4°	5°	6°	7°	8°	9°	10°	11°	12°	13°	14°	15°	16°	17°	18°	19°
341K	341K	339K	337K	335K	328K	313K	267K	148K	22K	5K	0K	0K	0K	0K	0K	0K	0K	0K	0K
100%	100%	100%	99%	98%	96%	92%	78%	44%	6%	2%	0%	0%	0%	0%	0%	0%	0%	0%	0%

Intensities in 90° C-plane

0°	1°	2°	3°	4°	5°	6°	7°	8°	9°	10°	11°	12°	13°	14°	15°	16°	17°	18°	19°
341K	341K	339K	337K	335K	328K	313K	267K	148K	22K	5K	0K	0K	0K	0K	0K	0K	0K	0K	0K
100%	100%	100%	99%	98%	96%	92%	78%	44%	6%	2%	0%	0%	0%	0%	0%	0%	0%	0%	0%

Intensities in 180° C-plane

0°	1°	2°	3°	4°	5°	6°	7°	8°	9°	10°	11°	12°	13°	14°	15°	16°	17°	18°	19°
341K	341K	339K	337K	335K	328K	313K	267K	148K	22K	5K	0K	0K	0K	0K	0K	0K	0K	0K	0K
100%	100%	100%	99%	98%	96%	92%	78%	44%	6%	2%	0%	0%	0%	0%	0%	0%	0%	0%	0%

Intensities in 270° C-plane

0°	1°	2°	3°	4°	5°	6°	7°	8°	9°	10°	11°	12°	13°	14°	15°	16°	17°	18°	19°
341K	341K	339K	337K	335K	328K	313K	267K	148K	22K	5K	0K	0K	0K	0K	0K	0K	0K	0K	0K
100%	100%	100%	99%	98%	96%	92%	78%	44%	6%	2%	0%	0%	0%	0%	0%	0%	0%	0%	0%

Beam Angle 50%	Field Angle 10%	Cutoff Angle 2,5%	Intensity Ratio in 120° Cone	Intensity Ratio in 90° Cone
15.7°	17.5°	19.6°	100.0%	100.0%